



Walker Grove, Hatfield, AL10 9PL


House - Townhouse | 4 Bedrooms

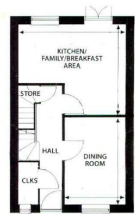
£1,775 PCM

**LARKHAM
PIKE** &

www.larkhamandpike.co.uk



Energy Efficiency Rating		
	Current	Potential
Very energy efficient - lower running costs		
(92 plus) A		86
(81-91) B		
(69-80) C	76	
(55-68) D		
(39-54) E		
(21-38) F		
(1-20) G		
Not energy efficient - higher running costs		
England & Wales		EU Directive 2002/91/EC
		



Ground Floor

Dining Room 12' 6" x 8" 6" (3862 x 2600)
Kitchen/Family
Breakfast Area 15' 5" x 12' 11" (4700 x 3955)



First Floor

Lounge 15' 5" x 10' 10" (4700 x 3322)
Bedroom 3 15' 5" x 8" 5" (4700 x 2567)



Second Floor

Master Bedroom 13' 3" x 11' 3" (4062 x 3432)
Bedroom 2 15' 5" x 8" 5" (4700 x 2568)